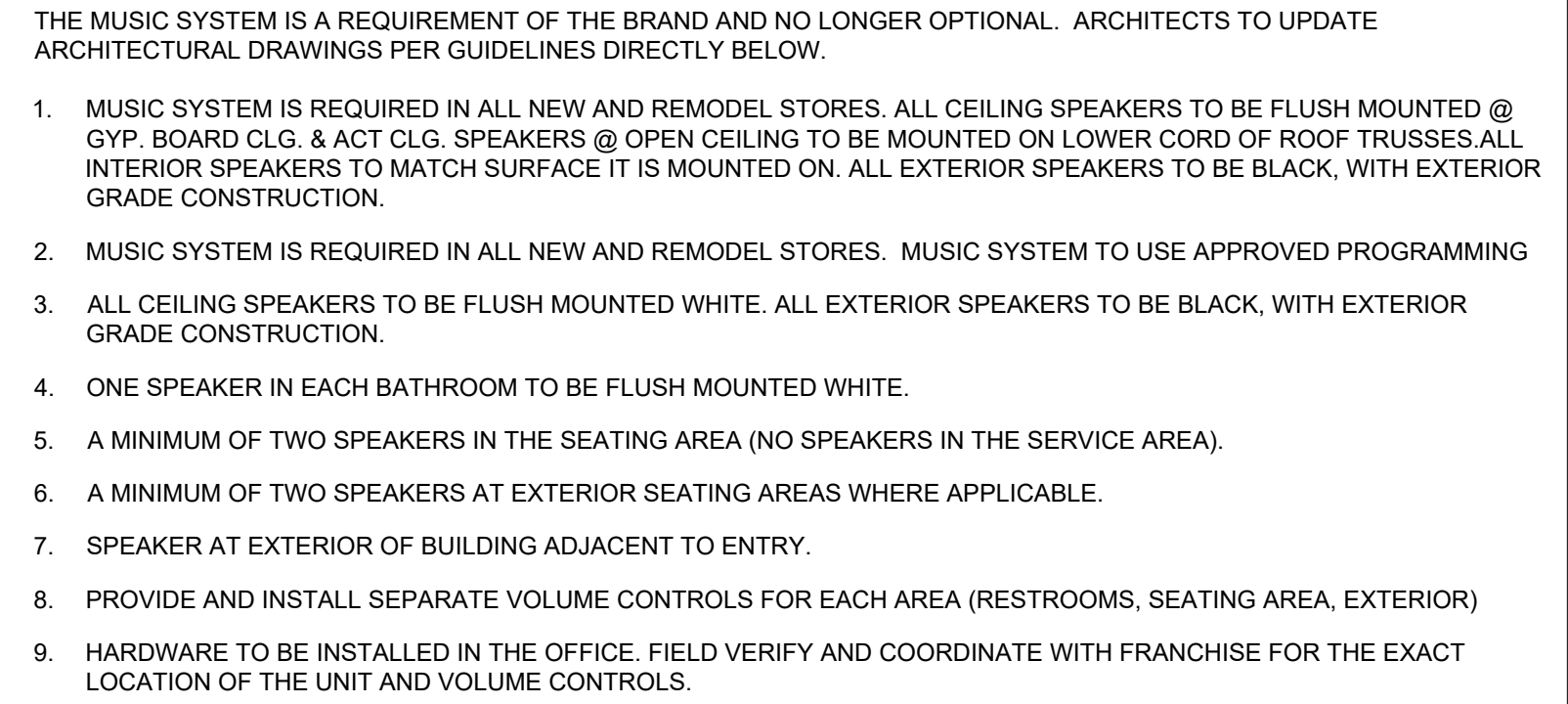


**WHEN THE LIGHTING CONTROL IS SPECIFIED WITH DIMMING CAPABILITIES, THE SHARING OF NEUTRALS IS STRICTLY PROHIBITED.**









POS-COMMUNICATIONS EQUIPMENT SCHEDULE

POS EQUIP & WIRING BY OTHERS

QTY	DESCRIPTION	LOCATION	LOAD		TRANS FORMER	LOVO TERM	REMARKS		
			VOLTS	AMPS					
POS EQUIPMENT									
1	4	POINT OF SALES TERMINAL (POS)	(2) FRONT COUNTER (1) D/T (1) D/T OT	100-120V	2.0	20A/1P	NO	RJ45	SHARES CIRCUIT WITH POS ITEMS 2 & 12
2	3	RECEIPT PRINTER	(2) FRONT COUNTER (1) D/T	100-240V	2.0	20A/1P	YES	RJ45	SHARE CIRCUIT WITH POS ITEMS 1 & 12
3	5	PREP PRINTER	(1) COFF. STATION (1) BEVERAGE STATION (2) SANDWICH (1) OTGO PRINTER	24/34V	1.2	20A/1P	YES	RJ45	
4	4	VDU	(1) BEVERAGE STA (1) SANDWICH (1) EXPEDITER @ D/T	100-240V	1.5	20A/1P	NO	N/A	SHARES CIRCUIT
5	4	VDU CONTROLLER (PC BASED)	(1) EXPEDITER @ HAND OFF	100-120V	1.0	20A/1P	YES	RJ45	
6	1	POS NETWORK HUB/ SWITCH	POS COFFEE FRONT CHASE	100-120V	0.5	20A/1P	YES	RJ45	SHARES CIRCUIT WITH POS ITEMS 1, 2 & 12
7	1	PC SITE CONTROLLER EXTERNAL	OFFICE	100-120V	4.0	20A/1P	NO	RJ45	
7a	1	PC SITE CONTROLLER INTERNAL	OFFICE	100-120V	4.0	20A/1P	NO	RJ45	
8	1	PRINTER/FAX/COPIER (BOH)	OFFICE	100-120V	8.2	20A/1P	NO	N/A	
9	3	SCANNER	(2) FRONT COUNTER (1) D/T				NO	RJ45	CONNECTED TO POS UNITS
10	3	PRICE CONFIRMATION DISPLAY	MOUNT OUTSIDE @ D/T WINDOW & BEHIND FRONT POS UNITS				NO	RJ45	CONNECTED TO D/T POS UNIT
11	0	NOT USED							
12	3	CASH DRAWER	UNDER CTR @ FRONT & D/T	N/A	N/A		NO	RJ45	SHARES CIRCUIT WITH POS ITEMS 1 & 2
13	0	NOT USED		N/A	N/A		NO	RJ45	VERIFY ALL ELECT & POS REQTS w/ MANUF
14	3	PAYMENT TERMINAL	(2) FRONT COUNTER (1) D/T	100-240V	0.5	20A/1P	NO	RJ45	VERIFY ALL ELECT & POS REQTS w/ MANUF
14a	3	VERIFONE SWITCH	(2) FRONT COUNTER (1) D/T						CONNECTED TO POS (1)
30	1	ORDER STATUS BOARD	(1) FRONT COUNTER						VERIFY ALL ELECT & POS REQTS w/ MANUF
OTHER COMMUNICATION DEVICES									
15	1	DRIVE THROUGH (DT) TIMER CONSOLE	OFFICE	120V	N/A		NO	RS232	MUST BE WITHIN 60FT OF DISPLAY
16	1	DT TIMER VDU DISPLAY		LOW VOLT	N/A		NO		
PHONE & DATA LINES									
18	0	SPARE	OFFICE	LOW VOLT	N/A		N/A	RJ45	
19A	0	SPARE	OFFICE	LOW VOLT	N/A		N/A	RJ45	
20	1	FAX LINE	OFFICE	LOW VOLT	N/A		N/A	RJ45	FAX LINE FOR OFFICE
21	1	PHONE LINE	OFFICE	LOW VOLT	N/A		N/A	RJ45	PHONE LINE FOR OFFICE
22	0	NOT USED							
23	1	HIGH SPEED INTERNET LINE (MNS)	OFFICE	LOW VOLT	N/A		N/A	RJ45	FOR SITE CONTROLLER & BOH PC
24	1	SYSTEM SECURITY DVR	SECURITY SYSTEM	LOW VOLT	N/A		N/A	RJ45	PLUGS INTO ROUTER PORT#2
25	8	DIGITAL MENU BOARD	OFFICE/SERVICE AREA	LOW VOLT	N/A		N/A	RJ45	PLUGS INTO ROUTER PORT#4
26	1	WIFI	OFFICE	LOW VOLT	N/A		N/A	RJ45	PLUGS INTO ROUTER PORT#5
26a	0	SECONDARY WIFI ACCESS POINT (OPT)	OFFICE	LOW VOLT	N/A		N/A	RJ45	PLUGS INTO ROUTER
27	1	OTT VOIP (PHONE)	OFFICE	LOW VOLT	N/A		N/A	RJ45	PLUGS INTO ROUTER
MUSIC SYSTEM									
28	1	MUSIC PLAYER	OFFICE						
29	0	NOT USED							
WORKSTATION									
31	1	MANAGER'S WORKSTATION	OFFICE						
32	0	MANAGER'S WORKSTATION (OPT)							
FIREWALL									
33	1	FIREWALL	OFFICE	LOW VOLT	N/A		N/A	RJ45	
34	1	BROADBAND MODEM	OFFICE	LOW VOLT	N/A		N/A	RJ45	
35		TEMPORARY WIRELESS BROADBAND DIAL-UP DATA SOLUTION	OFFICE						
36		NOT USED							
37		NOT USED							
SWITCHES									
38	1	SWITCH	OFFICE						
39	1	DD UTILITY SWITCH (OPT)	OFFICE						
40	1	DVR NETWORK SWITCH	OFFICE						
41	1	DIGITAL MENU BOARD SWITCH	OFFICE						
42	1	KIOSK SWITCH	OFFICE						
43									
44									
MENU BOARD									
45	4	INT DIGITAL MENU BOARDS							
46	2	EXT DIGITAL MENU BOARDS	EXTERIOR DRIVE THRU						
47	0	DRIVE PREVIEW BOARD	EXTERIOR DRIVE THRU						
48	1	ORDER CONFIRMATION BOARD	EXTERIOR DRIVE THRU						
49	0	NOT USED							

DIGITAL MENU BOARD RESPONSIBILITIES

GC POWER/DATA RESPONSIBILITY

- EC TO RUN DEDICATED CONDUIT FROM POWER PANEL TO JUNCTION BOX ON BACK SIDE OF MENU BOARD FASCIA AT CENTER LINE OF POS
- EC TO RUN CONDUIT WITH J-BOX FROM BACK SIDE OF MENU BOARD FASCIA AT CENTERLINE OF POS TO OFFICE

DMB VENDOR POWER/DATA RESPONSIBILITY

- CUT HOLE IN MENU BOARD FASCIA FOR POWER/DATA STACK
- IN STALL POWER/DATA STACK IN FASCIA
- RUN ELECTRICAL CONDUCTOR WIRE FROM MENU BOARD FASCIA TO ELECTRICAL PANEL
- MAKE FINAL ELECTRICAL CONNECTION AT POWER/ DATA STACK
- MAKE FINAL ELECTRICAL CONNECTION TO CIRCUIT AT POWER PANEL
- RUN CAT-5E CABLES AND TERMINATE ENDS AT MENU BOARD FASCIA POWER/DATA STACK AND IN OFFICE

\*PRIOR TO BIDDING OR PERFORMING WORK GC TO COORDINATE WITH AUTHORITY HAVING JURISDICTION (AHJ). AHJ MAY REQUIRE FULL WIRE PREP BY EC. GC TO ALERT CM, F&E AND DMB INSTALLER IF EC MUST PERFORM ALL ELECTRICAL INSTALL WORK.

CONDUIT NOTES

- DMB: PROVIDE (8) CAT 5 WIRE PULLS FROM (2) QUAD DATA OUTLETS IN MENU BOARD SOFFIT TO (2) QUAD DATA OUTLETS IN OFFICE WALL
- 2 CONDUITS MIN SHALL BE USED BETWEEN OFFICE & OTHER PARTS OF THE STORE  
1 CONDUIT FOR POS WIRING ONLY  
1 CONDUIT FOR NON-POS ITEMS

KIOSK NOTES

- G.C. TO PROVIDE A POWER / POS STUB UP FROM FLOOR OR A UNISTRUT RAIL SUSPENDED FROM ROOF STRUCTURE @ 10'-6" A.F.F. FOR ELECTRICAL/DATA CONNECTIONS AT ORDER KIOSKS.
- 20A CIRCUIT & (3) CAT-6 DATA CABLES EA - ALL WIRING & FINAL LOC'NS TBD IN FIELD w/ FRANCHISEE & MANUF REQUIREMENTS.
- PROVIDE WIRING FROM KIOSK TO FRONT LINE POS AREA FOR "REMOTE ASSISTANCE" w/ LIGHT AT POS UNIT - CONFIRM ALL REQUIREMENTS w/ MANUF.

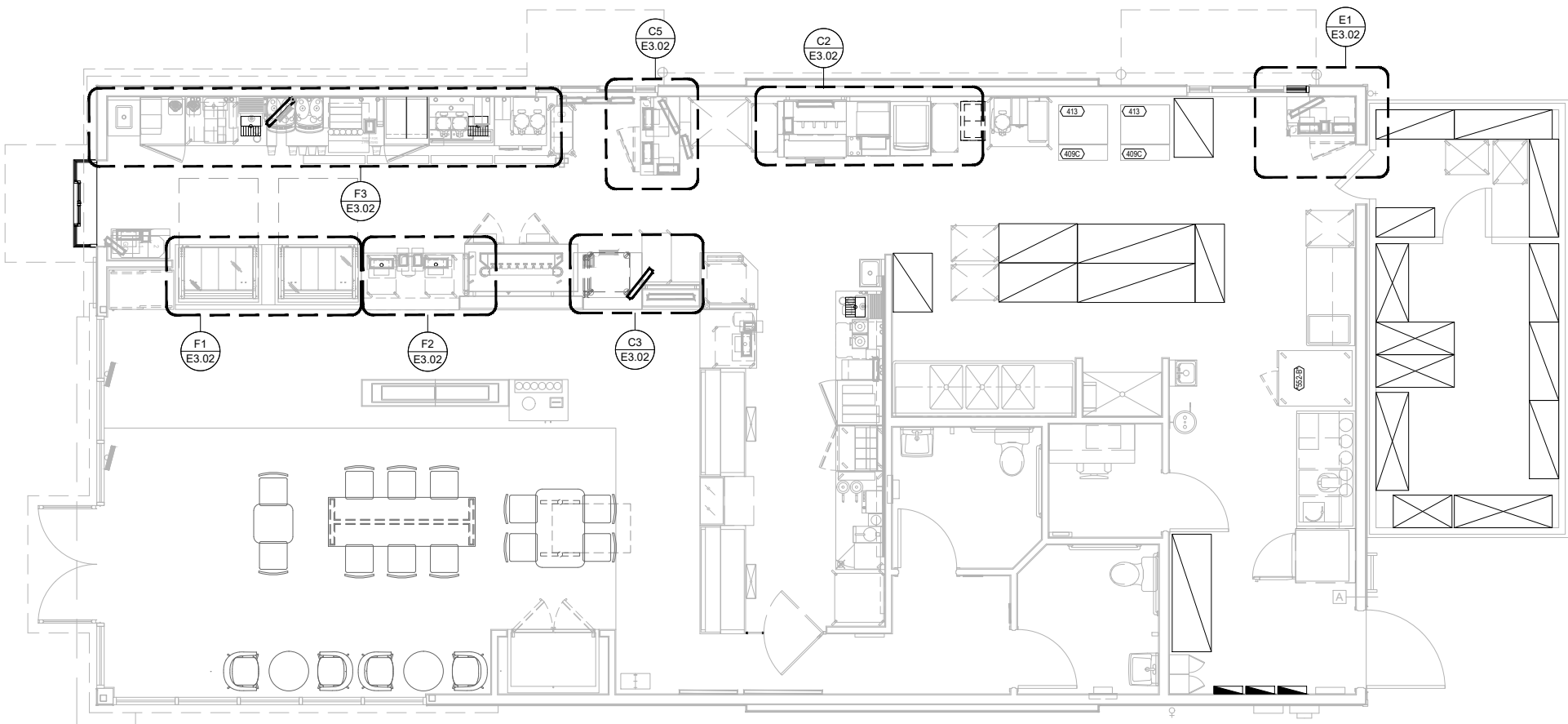
POS LEGEND

POS	POINT OF SALES TERMINAL
VDU	VIDEO DISPLAY UNIT
R	ROUTER
SC	SITE CONTROL (SELF-MOUNTING) RADIANT ONLY
RP	RECEIPT PRINTER
PP	PREP PRINTER
FAX	FAX
BOH PC	BACK-OF-HOUSE PC
UPS	UPS
M	MODEM
SW	SWITCH
OT	ORDER TAKER TERMINAL
DTC	DRIVE THROUGH CONSOLE
DTT	DRIVE THROUGH TIMER
VS	VERIFONE SWITCH
PT	PAYMENT TERMINAL
CASH DR	CASH DRAWER
CD	COIN DISPENSER
MWS	MANAGER'S WORKSTATION
DVR	DVR SECURITY SYSTEM

CAM	SECURITY SYSTEM CAMERA
PCD	PRICE CONFIRMATION DISPLAY
PCD	ORDER STATUS BOARD
KIOSK SW	KIOSK SWITCH
DMB SW	DIGITAL MENU BOARD SWITCH
DMB	DIGITAL MENU BOARD
EXT DMB	DRIVE THRU EXTERIOR DIGITAL MENU BOARD
TEMP M	TEMP WIRELESS DIAL UP
OCB	DRIVE THRU ORDER CONFIRMATION BOARD
DPB	DRIVE THRU DIGITAL PREVIEW BOARD
DPB	DRIVE THRU DIGITAL PREVIEW BOARD
OTT VOIP	OTT VOICE OVER-IP VOIP (PHONE)
	BUMP BAR
	VIDEO DISPLAY UNIT
	PRINTER
	POINT OF SALE TERMINAL
	SCANNER
	POS EQUIPMENT TAG
	DUPLEX RECEPTACLE
	DATA OUTLET, RJ45

GENERAL NOTES:

- REFER TO HTTP://EXTRANET.DUNKINBRANDS.COM FOR A LISTING OF APPROVED POS VENDORS BY CONCEPT.
- FINAL POS DRAWINGS NEED TO BE PROVIDED TO POS VENDOR THAT IS SELECTED.
- POS VENDORS REQUIRE DEDICATED ISOLATED GROUNDED (DIG) OUTLETS ON A 20 AMP CIRCUIT DEDICATED ONLY TO POS EQUIPMENT. 60HZ, 120V+-10%. ALL POS TERMINALS AND VIDEO DISPLAY DEVICES REQUIRE A DUPLEX OUTLET. THE BACK OFFICE CONTROLLER REQUIRES A QUAD OUTLET. THE NETWORK SWITCH REQUIRES A DUPLEX. IF FEDERAL, STATE, AND LOCAL WIRING CODES DO NOT MEET THIS REQUIREMENT, CONTACT THE POS VENDOR FOR INFORMATION ON ADDITIONAL EQUIPMENT THAT CAN BE PURCHASED TO MEET THIS REQUIREMENT. IF THIS REQUIREMENT IS NOT MET, THE POS SYSTEM WARRANTY IS INVALID.
- ALL POWER INDICATED ON THIS PLAN MUST HAVE A THIRD WIRE, ISOLATED GROUND, AND BE TERMINATED WITHIN (4) FEET OF THE DEVICE.
- IG-5362 RECEPTACLES MUST BE USED FOR ALL POS UNITS. VDU UNITS AND SITE CONTROLLER UNIT (IN OFFICE). LABEL RECEPTACLES "POS ONLY".
- ALL LOW VOLTAGE WIRE SHALL BE CATEGORY 5e UNLESS OTHER WISE INDICATED.
- ALL LOW VOLTAGE CABLE TERMINATIONS SHALL BE BY THE ELECTRICAL CONTRACOR
- LOW VOLTAGE CABLE RUN IN 1½" CONDUIT FOR POS EQUIPMENT ONLY, AND MUST BE TERMINATED WITH RJ45 JACKS. ALL POS EQUIPMENT LINES TERMINATE AT THE FRONT COUNTER CHASE.
- A 12" MINIMUM SEPARATION MUST BE MAINTAINED BETWEEN LOW VOLTAGE WIRES AND POWER WIRING (TO AVOID ELECTRICAL INTERFERENCE).
- BRAND REQUIREMENTS DICTATE THAT A MINIMUM OF THREE CONDUITS BE USED FOR DATA LINES BETWEEN THE OFFICE AND OTHER PARTS OF THE STORE- ONE CONDUIT IS TO BE DEDICATED TO POS WIRING, ONE FOR DIGITAL MENUBOARD DATA LINES, AND ANOTHER FOR NON-POS ITEMS (I.E. SECURITY CAMERAS, DT TIMERS, HEAD SET WIRING)
- EXACT # OF RECEPTACLES ON OFFICE MUST BE COORDINATED ON A PROJECT-BY-PROJECT BASIS IN TERMS OF EQUIPMENT LOCATED IN THE OFFICE
- ALL CEILING MOUNTED VDUS TO BE SUSPENDED FROM UNISTRUT BY THREADED ROD W/ WHITE PVC SLEEVE. CONNECT UNISTRUT TO ROOF STRUCTURE. VDU BY POS VENDOR; UNISTRUT & THREADED ROD BY G.C. UNISTRUT TO SUPPORT MINIMUM 50 LB. WEIGHT
- VDU MOUNTING HEIGHTS (TO BOTTOM OF MONITOR) ARE AS FOLLOWS:
  - SANDWICH STATION - 68" A.F.F.
  - DRIVE THRU - 61" A.F.F.
- DIGITAL MENUBOARD PREP WIRING:
  - PROVIDE BOX, PLATE AND 1" DIA. CONDUIT FROM FROM (2) QUAD DATA OUTLETS IN MENUBOARD SOFFIT TO (2) QUAD DATA OUTLETS IN OFFICE WALL. EITHER (A) PROVIDE PULL STRING IN EACH CONDUIT (CAT 5 CABLING AND FINAL DATA CONNECTIONS BY DMB VENDOR), OR (B) PROVIDE ALL CAT 5 CABLING AND FINAL CONNECTIONS TO DATA PLATES/BOXES- COORD. W/ F&E

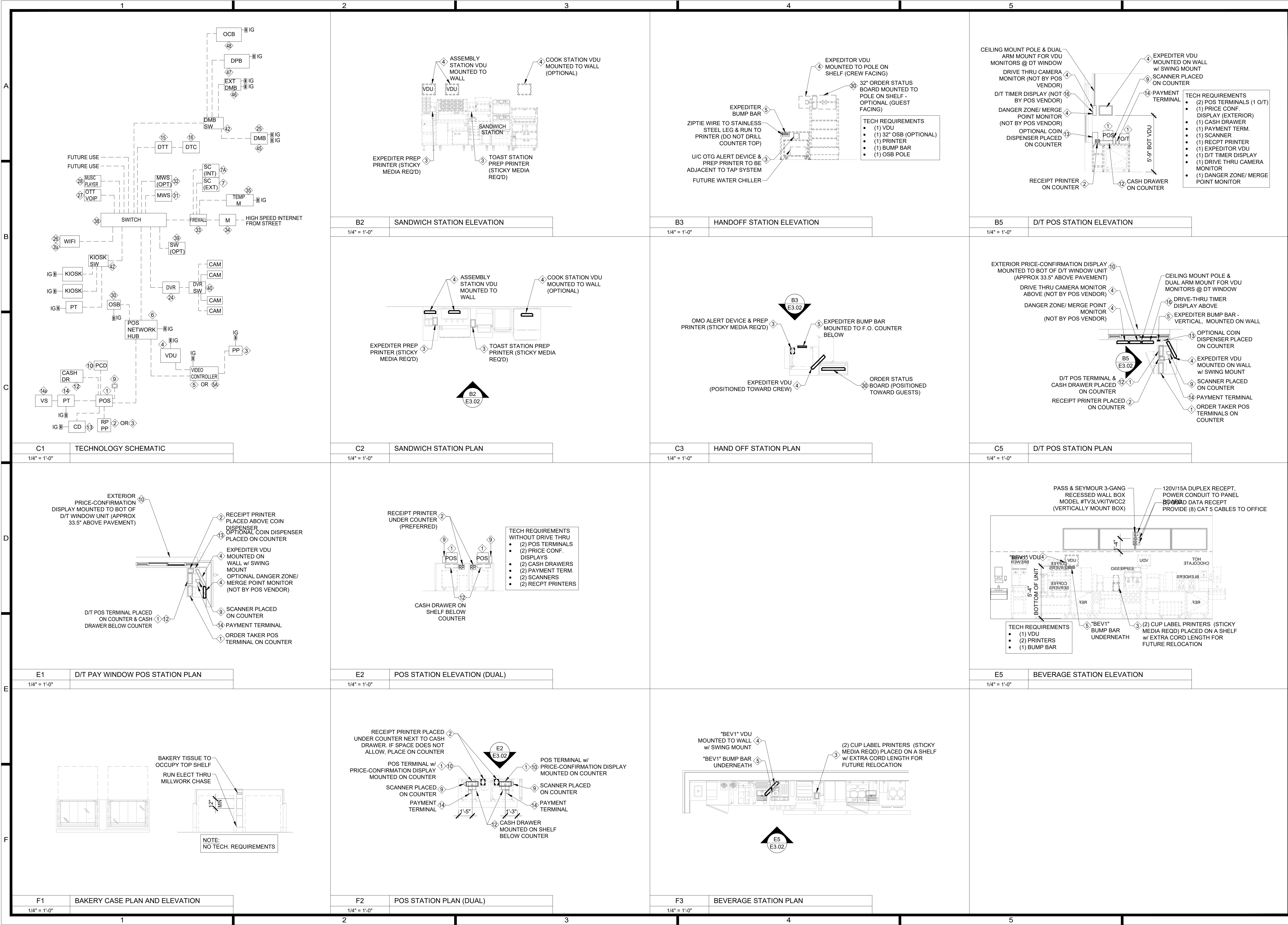


F4

KEY PLAN

1/8" = 1'-0"





1439 Centre Ct., Ste 401  
Alexandria, LA 71301  
Ph: 318.445.3151  
F: 318.445.3988  
Em: [adg@adgllc.net](mailto:adg@adgllc.net)

**DUNKIN'**

**BASKIN-ROBBINS**

1111 MacArthur Drive  
Alexandria, Louisiana 71301

PROJECT NO: 26010  
DRAWN: DJH  
CHECKED: WAT  
DATE: APRIL 2026  
LAST REV:

**E3.01**

© 2026, Alliance Design Group, LLC all rights reserved



ELECTRICAL PANEL SCHEDULES

SCHEDULE FOR: PANEL		M													
Voltage:		208 / 120 V		MLO		X Equip. Ground Bus		Poles: 42		Min CB I.C.		22,000 AIC			
Main Bus:		200 A		X MCB		200 A		Isol. Ground Bus		Mtg: Recessed		Comments:			
Ckt #	Serves	Load VA	Breaker P	Trip	Minimum Branch Circuit	Phase			Minimum Branch Circuit	Breaker Trip	P	Load VA	Serves	Ckt #	
						A	B	C							
1	Hood Exhaust Fans	684	1	20	2#12,#12G 3/4"	5271						4587	Roof Top Unit	2	
3	Hood Control Panel	200	1	20	2#12,#12G 3/4"		4787					4587	RTU#1	4	
5	Walk up Air Curtain	1200	1	20	2#12,#12G 3/4"				5787			4587	Front of House	6	
7	Drive Thru Air Curtain	1200	1	20	2#12,#12G 3/4"	6232						5032	Roof Top Unit	8	
9	Drive Thru Air Curtain	1200	1	20	2#12,#12G 3/4"		6232					5032	RTU#2	10	
11	Front Door Air Curtain	1200	1	20	2#12,#12G 3/4"				6232			5032	Back of House	12	
13	Bug Light at Back Door	600	1	20	2#12,#12G 3/4"	960						360	RTU Receptacles	14	
15							360					360	Drive Thru Monitor	16	
17	Hand Dryer	1800	1	20	2#12,#12G 3/4"			3000				1200	Undercounter Ref.	18	
19	Hand Dryer	1800	1	20	2#12,#12G 3/4"	1920						120	Warmer	20	
21	Water Heater	180	1	20	2#12,#12G 3/4"		300					120	Warmer	22	
23	Water Booster Pump	360	1	20	2#12,#12G 3/4"			480				120	Scale	24	
25	Ice Cream Freezer	860	1	20	2#12,#12G 3/4"	2060						1200	Cone Maker	26	
27	Dipping Cabinet	920	1	20	2#12,#12G 3/4"		1040					120	Dipping Choco. Warmer	28	
29	Dipping Cabinet	920	1	20	2#12,#12G 3/4"			2645				1725	460-1 Hardening Cabinet	30	
31	Display Freezer	1144	2	20	2#12,#12G 3/4"	2344						1200	Walk-in Miscellaneous	32	
33		1144					2538					1394	Walk-in Refrigerator	34	
35	Sundae Station	860	1	20	2#12,#12G 3/4"			2254				1394	Condenser and Evaporator	36	
37	Countertop Blender	1800	1	20	2#12,#12G 3/4"	4154						2354	Walk-in Freezer	38	
39	Countertop Blender	1800	1	20	2#12,#12G 3/4"		4154					2354	Condenser and Evaporator	40	
41	Dairy Dispenser	120	1	20	2#12,#12G 3/4"			2474				2354		42	
Total Connected Load (VA)						65224	22941	19411	22872	VA per phase					
							191.2	161.8	190.6	Amps per phase		181	Total Connected Load (Amps)		

SCHEDULE FOR:		PANEL		P															
Voltage:		208 / 120 V				MLO		X Equip. Ground Bus		Poles: 42		Min CB I.C.		22,000 AIC					
Main Bus:		200 A		X MCB		200 A		Isol. Ground Bus		Mtg: Recessed		Comments:							
Ckt #	Serves	Load VA	Breaker P	Trip	Minimum Branch Circuit	Phase			Minimum Branch Circuit	Breaker Trip	P	Load VA	Serves	Ckt #					
						A	B	C											
1	POS - Counter	1200	1	20	2#12,#12G 3/4"	2343				2#12,#12G 3/4"	20	1	1143	Lighting - Exterior	2				
3	POS - Drive Thru	600	1	20	2#12,#12G 3/4"		880			2#12,#12G 3/4"	20	1	280	Lighting - Wall Packs	4				
5	Beverage - Video / Printer	600	1	20	2#12,#12G 3/4"			1442		2#12,#12G 3/4"	20	1	842	Lighting - Front of House	6				
7	Video / Printer	600	1	20	2#12,#12G 3/4"	1245				2#12,#12G 3/4"	20	1	645	Lighting - Back of House	8				
9	Video Display - Ceiling	600	1	20	2#12,#12G 3/4"		600				20	1		Exterior Signage	10				
11	POS - Order Kiosk	400	1	20	2#12,#12G 3/4"			400			20	1		Exterior Signage	12				
13	Office Receptacles	1440	1	20	2#12,#12G 3/4"	1440					20	1		Exterior Signage	14				
15	Office Receptacles	1440	1	20	2#12,#12G 3/4"		2640			2#12,#12G 3/4"	20	1	1200	Drive Thru Menu Boards	16				
17	Digital Menu Boards	1200	1	20	2#12,#12G 3/4"			1400		2#12,#12G 3/4"	20	1	200	OTG Illuminated Panel	18				
19	414 Ice Machine	1664	2	30	3#10,#10G 3/4"	2264				2#12,#12G 3/4"	20	1	600	POS - Walk Up	20				
21		1664					2264			2#12,#12G 3/4"	20	1	600	Five (5) Quart Mixer	22				
23	535 Universal Oven	792	1	20	2#12,#12G 3/4"			1992		2#12,#12G 3/4"	20	1	1200	563 Power Base	24				
25	Headset Transmitter	180	1	20	2#12,#12G 3/4"	360				2#12,#12G 3/4"	20	1	180	Recept - Digital Cake Book	26				
27	Drive Thru System	1200	1	20	2#12,#12G 3/4"		1740			2#12,#12G 3/4"	20	1	540	Recept - Show Window	28				
29	Illuminated Canopy	600	1	20	2#12,#12G 3/4"			1140		2#12,#12G 3/4"	20	1	540	Recept - Show Window	30				
31	Directional Signs	1200	1	20	2#12,#12G 3/4"	2100				2#12,#12G 3/4"	20	1	900	Recept - USB	32				
33	Monument Sign	1200	1	20	2#12,#12G 3/4"		1380			2#12,#12G 3/4"	20	1	180	Recept - Community Table	34				
35	Site Lighting	1200	1	20	2#12,#12G 3/4"			2280		2#12,#12G 3/4"	20	1	1080	Recept - General	36				
37	Site Lighting	1200	1	20	2#12,#12G 3/4"	1560				2#12,#12G 3/4"	20	1	360	Recept - Restrooms	38				
39	Site Lighting	1200	1	20	2#12,#12G 3/4"		1200				20	1		Recept - Exterior	40				
41	Site Lighting	1200	1	20	2#12,#12G 3/4"			1200							42				
Total Connected Load (VA)						31870		11312	10704	9854	VA per phase			88		Total Connected Load (Amps)			
								94.3	89.2	82.1	Amps per phase								

SCHEDULE FOR:		PANEL		K																
Voltage:		208 / 120 V				MLO		X Equip. Ground Bus		Poles: 42		Min CB I.C.		22,000 AIC						
Main Bus:		200 A		X MCB		200 A		Isol. Ground Bus		Mtg: Recessed		Comments:								
Ckt #	Serves	Load VA	Breaker P	Trip	Minimum Branch Circuit	Phase			Minimum Branch Circuit	Breaker Trip	P	Load VA	Serves	Ckt #						
						A	B	C												
1	119 Hot Winter Beverage	2257	2	30	3#10,#10G 3/4".	2497						240	82G Bakery Display Case	2						
3		2257					3589					1332	8 Tap Beverage Unit	4						
5	101E Dairy Dispenser	180	1	20	2#12,#12G 3/4".			1320				1140	E6 Future Chiller	6						
7	122 Undercounter Refrig	1680	1	20	2#12,#12G 3/4".	2680						1000	Pepsi Refrigerator	8						
9	116.2A Vitamix	1800	1	20	2#12,#12G 3/4".		1800							10						
11	116.2A Vitamix	1800	1	20				2160				360	101L Sugar Dispenser	12						
13	96.4A Espresso Machine	3600	2	30	2#8,#10G 3/4".	5400						1800	246A Holding Unit	14						
15		3600					4740					1140	375 Assembly Station	16						
17	101E Dairy Dispenser	180	1	20	2#12,#12G 3/4".			2655				2475	244 Dual Lane Toaster	18						
19	101Q Coffee Grinder	1320	1	20	2#12,#12G 3/4".	3795						2475		20						
21	124E Single SH Brewer	1747	2	20	3#12,#12G 3/4".		4742					2995	215 Turbo Chef Oven	22						
23		1747					4742					2995		24						
25	122 Undercounter Refrig	1680	1	20	2#12,#12G 3/4".	4675						2995	215 Turbo Chef Oven	26						
27	124A Twin SH Brewer	4004	2	50	3#6,#10G 1".		6999					2995		28						
29		4004						5120				1116	Cook Station Refrig (Future)	30						
31	200A Iced Coffee Brewer	2028	2	30	3#10,#10G 3/4".	2820						792	535 Universal Oven	32						
33		2028					3228					1200	563 Power Base	34						
35	414 Ice Machine	1664	2	20	2#12,#12G 3/4".			2204				540	70.58 Donut Display Rack	36						
37		1664					1664					30	2							
39	124G Twin Stand	216	1	20	2#12,#12G 3/4".		216													
41	101L 101L Sugar Dispenser	360	1	20	2#12,#12G 3/4".			360												
						23531	25314	18561	VA per phase											
						196.1	211.0	154.7	Amps per phase		187		Total Connected Load (Amps)							